



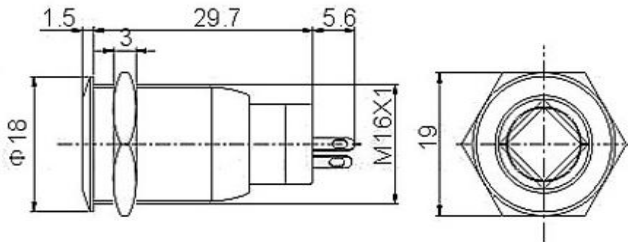
**2 YEAR  
WARRANTY**

## TH002

**THOR rugged metal push button remote control with green status LED ring with detachable face plate.**

This chrome-plated metal button remote is rugged and looks really good while doing it! Simply drill a 16mm hole into any material up to 1/2" thick and you can fit these in place, there's even a rubber gasket to keep water out of the enclosure. On the front of the button is a flat metal actuator, surrounded by a Green plastic LED ring.

This button is a momentary push button. When pressed it will either turn your THOR inverter On or Off.



### Design Features

- Remote control module for use with THOR inverters
- Includes detachable Remote Control module face plate
- Includes 20 feet remote cord
- Allows you to switch inverters output On or Off
- Drill hole diameter: 16mm
- Material: Chrome Plated brass
- Panel Thickness: 1-13mm

Model #	TH002
Stand By Current	< 40 mA
Operating Temperature Range	0°C to 40°C / 32°F to 104°F
Storage Temperature	-30°C to 70°C / -22°F to 158°F
Connecting Cables	20Ft, 4 connectors, 4P4C or 6P4C Modular Plugs, Straight Connection
Face Plate Dimensions	3" W x 2" H
Push Button Diameter	Diameter: 16 mm
Weight	4.5 Ounces
Mechanical Life	1,000,000 cycles
LED life	40000 Hours
For use with specific Inverter models.	TH1000, TH1500, TH2000, TH3000, TH5000, THMS1000, THMS1500, THMS2000, THMS3000